

Addon installieren und konfigurieren

Beschreibung:

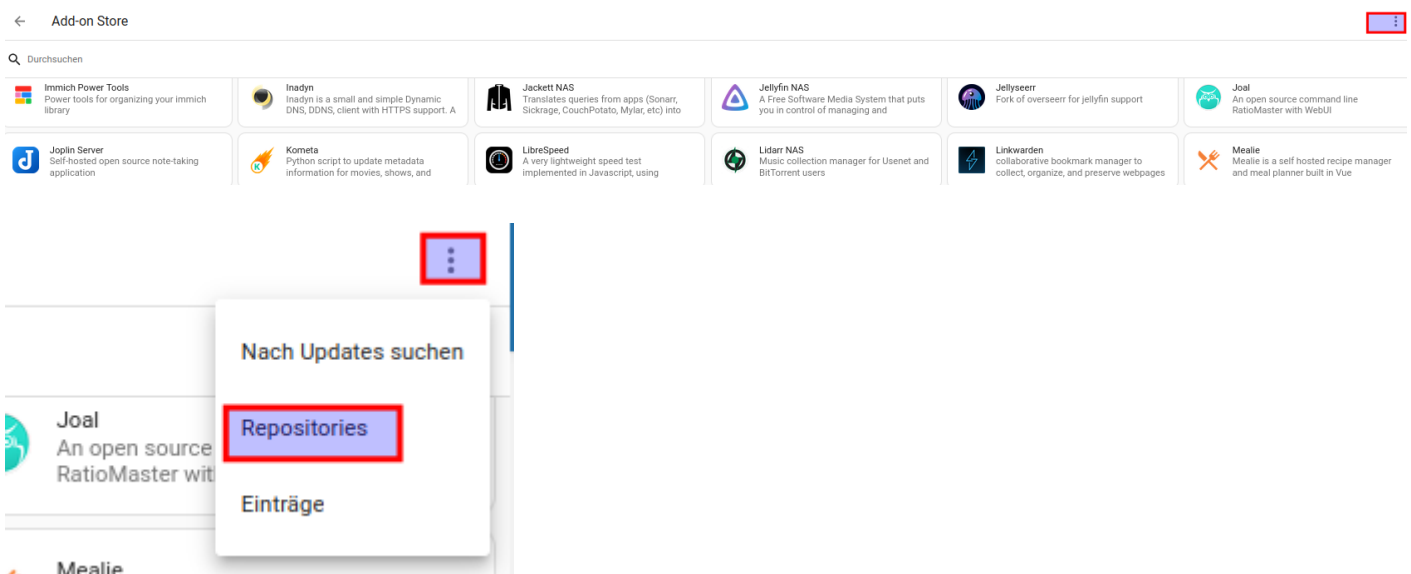
Es gibt einen Virtual Here client für Home Assistant.

So lassen sich vom Host System in die Virtuelle Machien von Home Assistant zum Beispiel Coral und der Z-Wave Stick durchreichen.

ja es wird eine Licence von Virtual here benötigt, aber dafür läuft. Es werden alle USB Geräte durchgeschliffen.

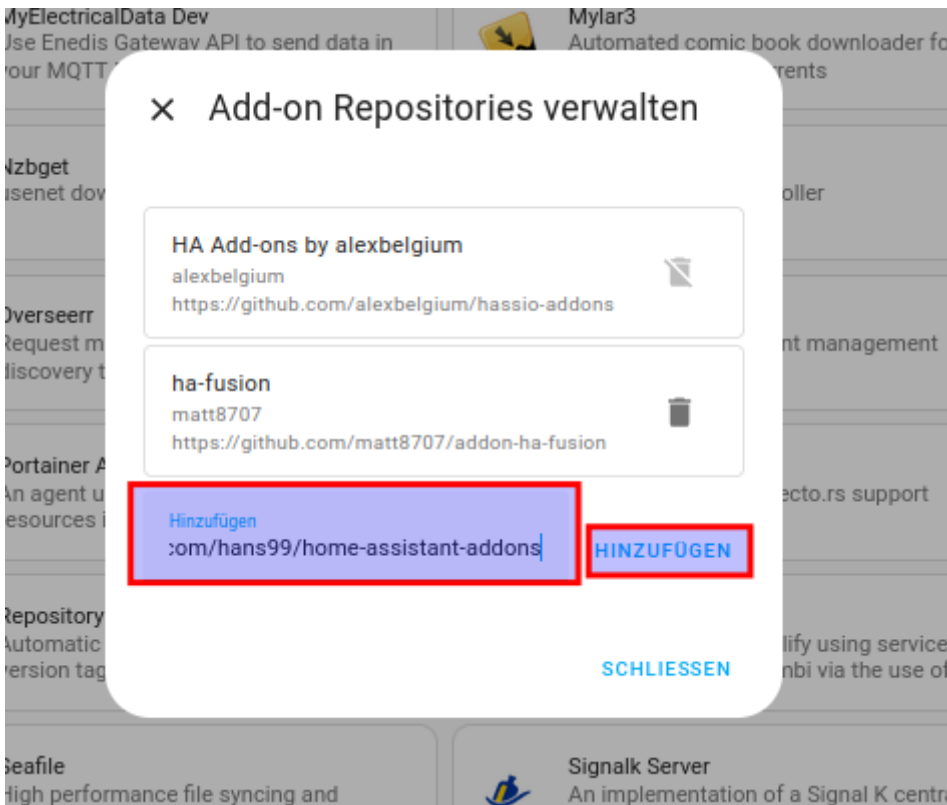
Installation:

Unter Addon Store weiteres Repo hinzugügen über die 3 Punkte

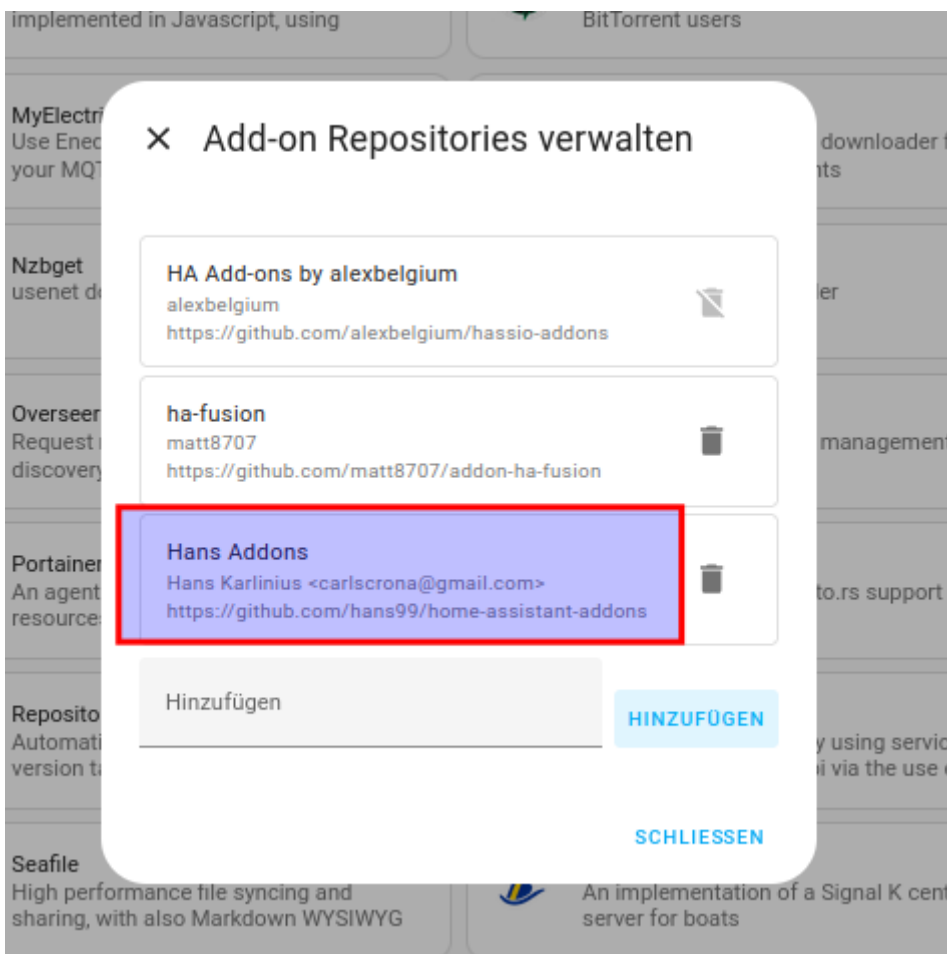


Nun folgende URL eintragen und auf hinzufügen klicken

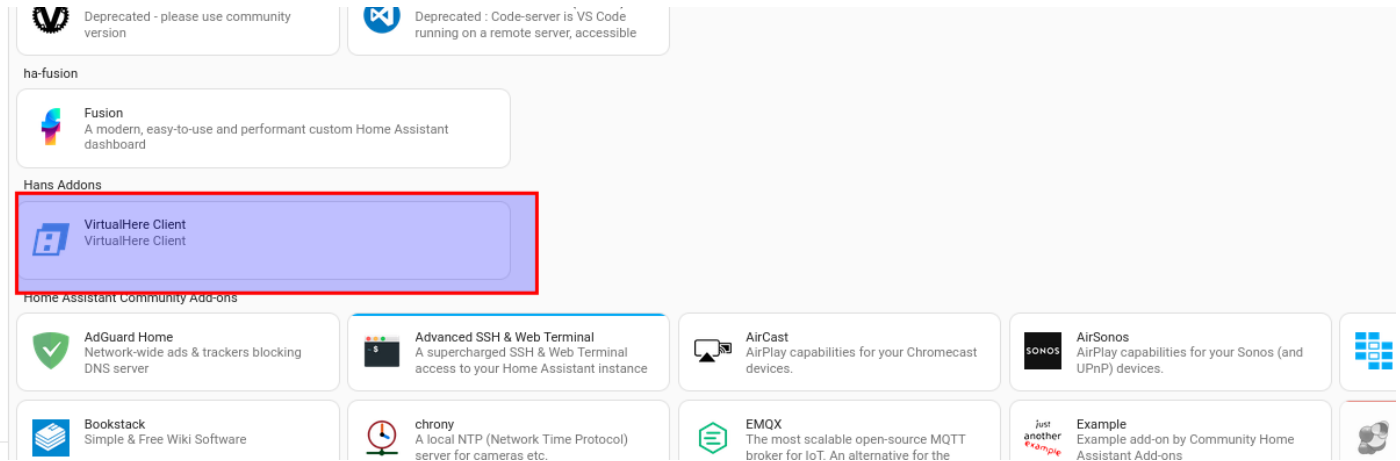
<https://github.com/hans99/home-assistant-addons>



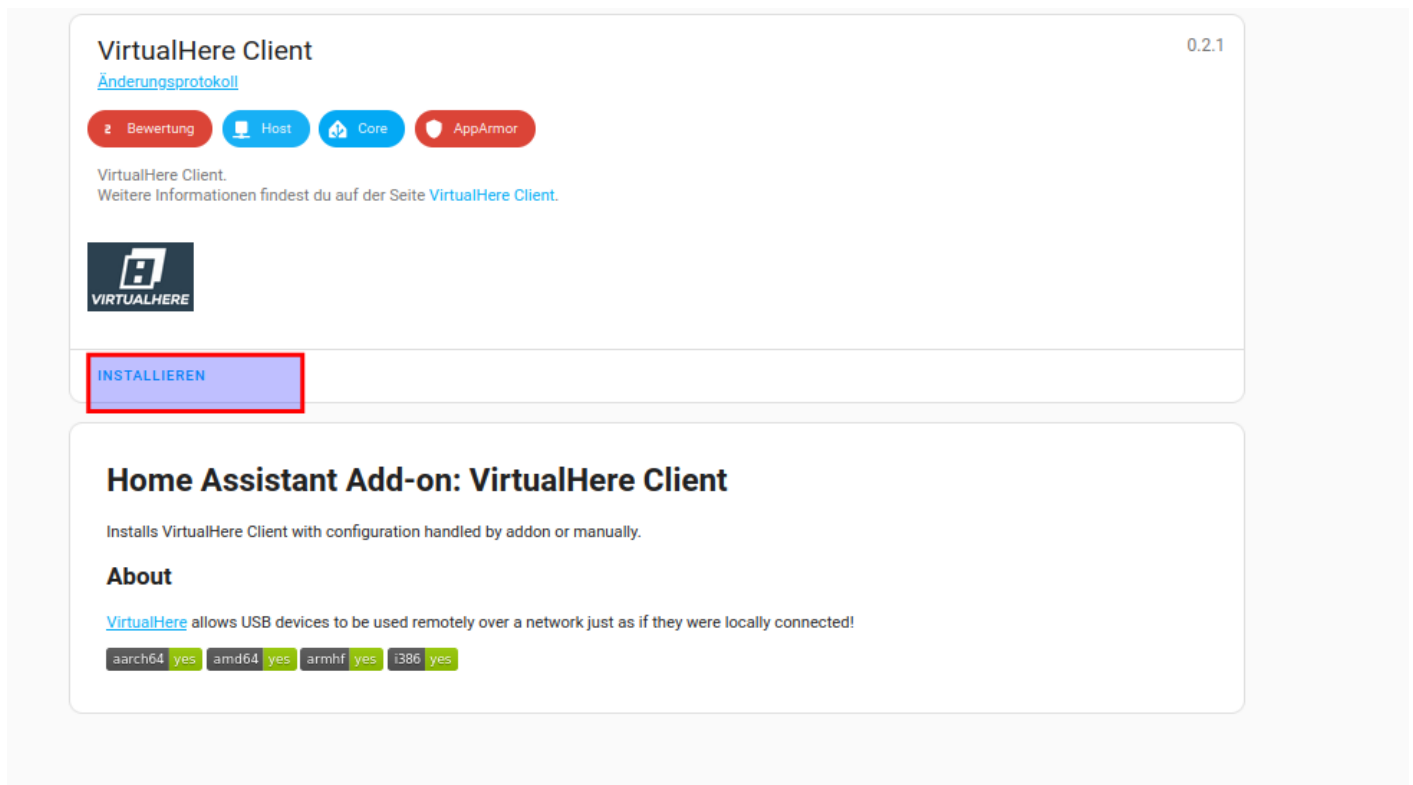
Nun stehen Has Addon drin auf schließen klicken



Nun den Addon Store nochmals laden (Seite wechsel wieder in den Addon Store) und bei Hans Addons auf Virtual Here klicken



Nun auf Installieren klicken



Parameter :

Parameter	Funktion	Werte
Autouse	Alle USB Geräte Verbinden (Benötigt Lizenz auf dem Server)	True/False
Autofind	Macht ein Autodiscover durchs Subnetz und verbindet automatisch alle gefundenen Server	True/False

<p>USB Devices</p>	<p>Dort können USB Geräte explizit gesetzt werden. Autouse muss False sein. Um eine Liste zu bekommen auf irgendeinem Rechner den Client ausführen.</p> <p>-c die IP des Servers ./vhclientx86_64 -c 192.168.177.63 -t LIST</p> <p>hier downloaden für PC amd64</p>	<p>Pro Zeile</p> <div style="border: 1px solid black; padding: 10px;"> <ul style="list-style-type: none"> - device: 0x0200 (duffy-desktop.31) use: false - device: Mass Storage Device (duffy-desktop.114) use: false - device: USB2.0 Digital Camera (duffy-desktop.211) use: false - device: BT2.0 (duffy-desktop.32) use: false - device: USB Receiver (duffy-desktop.113) use: false </div>
--------------------	---	--

Ausgabe des Clients mit dem Paramter LIST

```
Desktop Hub (duffy-desktop:7575)
--> 0x0200 (duffy-desktop.31)
--> Mass Storage Device (duffy-desktop.114)
--> USB2.0 Digital Camera (duffy-desktop.211)
--> BT2.0 (duffy-desktop.32)
--> USB Receiver (duffy-desktop.113)
```

Oder im Protokoll

```
[18:59:07] INFO: server: <connection connectionid= 1 secure= false servermajor= 4 serverminor= 7 serverid= ee81-e011-8f76-0013d4d9c9f6" license_max_devices="1" state="3" connectedTime="2025-05-12T19:59:02" host="192.168.177" easyFindAvailable="true" easyFindId="ko9ndcy2RpGtQZddnZ0Sbg==" easyFindPin="vYNdzA==" easyFindAuthorized="0" ip="192"
s6-rc: info: service vhclient-connected successfully started
s6-rc: info: service config-devices: starting
[18:59:07] INFO: Adding to config: 0x0200 (duffy-desktop.31)
[18:59:07] INFO: Adding to config: Mass Storage Device (duffy-desktop.114)
[18:59:07] INFO: Adding to config: USB2.0 Digital Camera (duffy-desktop.211)
[18:59:08] INFO: Adding to config: BT2.0 (duffy-desktop.32)
[18:59:08] INFO: Adding to config: USB Receiver (duffy-desktop.113)
s6-rc: info: service config-devices successfully started
s6-rc: info: service vhclient-use-devices: starting
[18:59:08] INFO: AutoShare enabled, will not use devices from configuration
s6-rc: info: service vhclient-use-devices successfully started
s6-rc: info: service legacy-services: starting
s6-rc: info: service legacy-services successfully started
```

Autofind auf true

ClientDI setzen (Das der Anme der dann auf dem Server erscheint in use by Name, hier HomeAssistant

Manual HUB. wenn der Server angegeben werden soll.

Der Port muss mit angegeben werden, hatte ich vergessen also IP:port

Speichern

Informationen Dokumentation **Konfiguration** Protokoll

VirtualHere Client

Optionen

AUTOUSE
Turn auto-use all devices on / off

AUTOFIND
Turn auto-find on / off

USB devices

1	
---	--

Auto populated from server list, manually update use to true

No client config
Addon should stop editing vhclient config file

Clientid
HomeAssistant
In use by, presentation on the server

MANUAL HUB
192.168.177.120
Specify server to connect to

Nicht verwendete optionale Konfigurationsoptionen einblenden

SPEICHERN

Fertig starten

VIRTUALHERE

Beim Booten starten
Das Add-on beim Systemstart ebenfalls starten

Watchdog
Dies startet das Add-on neu, falls es abstürzen sollte

Automatische Updates
Das Add-on automatisch aktualisieren, sobald eine neue Version verfügbar ist

STARTEN **DEINSTALLIEREN** **NEU BAUEN**

Im Protokoll nachschauen ob verbunden, wie man sieht Lizenzprüfung ;-)

← Informationen Dokumentation Konfiguration **Protokoll**

Q Protokolle durchsuchen

VirtualHere Client

```
s6-rc: info: service s6rc-oneshot-runner: starting
s6-rc: info: service s6rc-oneshot-runner successfully started
s6-rc: info: service fix-attrs: starting
s6-rc: info: service fix-attrs successfully started
s6-rc: info: service legacy-cont-init: starting
s6-rc: info: service legacy-cont-init successfully started
s6-rc: info: service init-vhclient: starting
s6-rc: info: service init-config: starting
s6-rc: info: service init-vhclient successfully started
[02:11:33] INFO: Enable General AutoFind
[02:11:33] INFO: Enable AutoShare All
[02:11:33] INFO: Set General ClientId to "HomeAssistant"
[02:11:33] INFO: Set Settings ManualHubs to "192.168.177.120"
s6-rc: info: service init-config successfully started
s6-rc: info: service vhclient: starting
s6-rc: info: service vhclient successfully started
s6-rc: info: service vhclient-connected: starting
[02:11:33] INFO: Starting VirtualHere Client
[02:11:33] INFO: Waiting a bit for vhclient ...
2025-05-09 02:11:34 INFO :Log Started
2025-05-09 02:11:34 INFO :VirtualHere Client 5.8.7 starting (Compiled: Apr 25 2025 14:02:48)
2025-05-09 02:11:34 INFO :Client OS is Linux 6.6.74-haos-raspi aarch64
2025-05-09 02:11:34 INFO :Using config at /config/vhclient.ini
2025-05-09 02:11:34 INFO :IPC available at /tmp/vhclient
2025-05-09 02:11:34 INFO :Auto-find (Bonjour) on
2025-05-09 02:11:34 INFO :Auto-find (Bonjour SSL) on
[02:11:39] INFO: Server:
s6-rc: info: service vhclient-connected successfully started
s6-rc: info: service config-devices: starting
s6-rc: info: service config-devices successfully started
s6-rc: info: service vhclient-use-devices: starting
[02:11:39] INFO: AutoShare enabled, will not use devices from configuration
s6-rc: info: service vhclient-use-devices successfully started
s6-rc: info: service legacy-services: starting
s6-rc: info: service legacy-services successfully started
2025-05-12 18:12:35 INFO :VirtualHere USB Server Trial Edition (192.168.177.63:7575)
2025-05-12 18:12:36 INFO :Please purchase a license to share more devices simultaneously
(Auto-Use all is now off)
2025-05-12 18:12:36 INFO :Please purchase a license to share more devices simultaneously
2025-05-12 18:12:36 INFO :Please purchase a license to share more devices simultaneously
```

Protokoll

```
2025-05-09 02:11:34 INFO :Log Started
2025-05-09 02:11:34 INFO :VirtualHere Client 5.8.7 starting (Compiled: Apr 25 2025 14:02:48)
2025-05-09 02:11:34 INFO :Client OS is Linux 6.6.74-haos-raspi aarch64
2025-05-09 02:11:34 INFO :Using config at /config/vhclient.ini
2025-05-09 02:11:34 INFO :IPC available at /tmp/vhclient
2025-05-09 02:11:34 INFO :Auto-find (Bonjour) on
2025-05-09 02:11:34 INFO :Auto-find (Bonjour SSL) on
[02:11:39] INFO: Server:
s6-rc: info: service vhclient-connected successfully started
s6-rc: info: service config-devices: starting
s6-rc: info: service config-devices successfully started
s6-rc: info: service vhclient-use-devices: starting
[02:11:39] INFO: AutoShare enabled, will not use devices from configuration
s6-rc: info: service vhclient-use-devices successfully started
s6-rc: info: service legacy-services: starting
```

s6-rc: info: service legacy-services successfully started

2025-05-12 18:12:35 INFO :VirtualHere USB Server Trial Edition (192.168.177.63:7575)

2025-05-12 18:12:36 INFO :Please purchase a license to share more devices simultaneously
(Auto-Use all is now off)

2025-05-12 18:12:36 INFO :Please purchase a license to share more devices simultaneously

2025-05-12 18:12:36 INFO :Please purchase a license to share more devices simultaneously

Version #10

Erstellt: 8 Mai 2025 23:59:26 von Admin

Zuletzt aktualisiert: 31 Mai 2025 09:27:54 von Admin