

IPMI, MEGARAC, iDRac, BMC

Alles was mit integrierter Remoteverbindung zu tun hat

- iKVM Clients
 - Alte jnlp Viewer (javaWebstart Dateien mit Aktueller Java zum laufen bringen)
 - Windows 7 VM für iPMIView und iKVM

iKVM Clients

Alte jnlp Viewer (javaWebstart Dateien mit Aktueller Java zum laufen bringen)

Beschreibung:

Seid Java 11 funktionieren jnlp Dateien nicht mehr.
Es gib aber eine möglichkeit diese doch noch zu nutzen.

Mit dem Tool <https://openwebstart.com/>

Vorraussetzung:

```
apt install gnutls-bin
```

Installation

Einfach die deb Datei downloaden installieren.

Ausführen.

```
javaws jviewer.jnlp
```

eure datei kann auch anders heißen

Sollte dieser feherl auftauchen

```
orge.jnlp.LaunchException: Fatal: Initialization Error: Unknown Main-Class. Could not determine the main class  
for this application.
```

Log aus dem Error Fenster

net.sourceforge.jnlp.LaunchException: Fatal: Initialization Error: Could not initialize application. The application has not been initialized, for more information execute javaws from the command line.

```
at net.sourceforge.jnlp.Launcher.createApplication(Launcher.java:593)
at net.sourceforge.jnlp.Launcher.launchApplication(Launcher.java:374)
at net.sourceforge.jnlp.Launcher.access$300(Launcher.java:72)
at net.sourceforge.jnlp.Launcher$TgThread.run(Launcher.java:661)
```

Caused by: net.sourceforge.jnlp.LaunchException: Fatal: Initialization Error: Unknown Main-Class. Could not determine the main class for this application.

```
at
net.sourceforge.jnlp.runtime.classloader.JNLPClassLoader.initializeResources(JNLPClassLoader.java:753)
at
net.sourceforge.jnlp.runtime.classloader.JNLPClassLoader.<init>(JNLPClassLoader.java:352)
at
net.sourceforge.jnlp.runtime.classloader.JNLPClassLoader.createInstance(JNLPClassLoader.java:425)
at
net.sourceforge.jnlp.runtime.classloader.JNLPClassLoader.getInstance(JNLPClassLoader.java:497)
at
net.sourceforge.jnlp.runtime.classloader.JNLPClassLoader.getInstance(JNLPClassLoader.java:470)
at net.sourceforge.jnlp.Launcher.createApplication(Launcher.java:585)
... 3 more
```

Log aus der Konsole der die eigentlichen Fehler anzeigt

Ganze Log aus Log Fenster

```
No local file found for https://192.168.178.195/Java/release/Linux_x86_64.jar
Error flag set for resource 'https://192.168.178.195/Java/release/Linux_x86_64.jar'. Can not
return a local file for the resource
Activate native: https://192.168.178.195/Java/release/Linux_x86_64.jar
Activate jar: https://192.168.178.195/Java/release/Linux_x86_64.jar
CachedJarFileCallback.addMapping : https://192.168.178.195/Java/release/Linux_x86_64.jar ->
https://192.168.178.195/Java/release/Linux_x86_64.jar
Error flag set for resource 'https://192.168.178.195/Java/release/Linux_x86_64.jar'. Can not
return a local file for the resource
DownloadServiceListener will be disposed
Download done. Shutting down executor
```

DownloadServiceListener for JViewer will be created
Jars not ready to provide attribute Application-Name
checkForMain JAR https://192.168.178.195/java/release/Linux_x86_64.jar not found. Continuing.
Error flag set for resource 'https://192.168.178.195/java/release/Linux_x86_64.jar'. Can not
return a local file for the resource
Error flag set for resource 'https://192.168.178.195/java/release/Linux_x86_64.jar'. Can not
return a local file for the resource
Error flag set for resource 'https://192.168.178.195/java/release/Linux_x86_64.jar'. Can not
return a local file for the resource
Error flag set for resource 'https://192.168.178.195/java/release/Linux_x86_64.jar'. Can not
return a local file for the resource
No local file found for https://192.168.178.195/java/release/JViewer-SOC.jar
Error flag set for resource 'https://192.168.178.195/java/release/JViewer-SOC.jar'. Can not
return a local file for the resource
Activate native: https://192.168.178.195/java/release/JViewer-SOC.jar
Activate jar: https://192.168.178.195/java/release/JViewer-SOC.jar
CachedJarFileCallback.addMapping : https://192.168.178.195/java/release/JViewer-SOC.jar ->
https://192.168.178.195/java/release/JViewer-SOC.jar
Error flag set for resource 'https://192.168.178.195/java/release/JViewer-SOC.jar'. Can not
return a local file for the resource
DownloadServiceListener will be disposed
Download done. Shutting down executor
System logger called with result of 0
DownloadServiceListener for JViewer will be created
Jars not ready to provide attribute Application-Name
checkForMain JAR https://192.168.178.195/java/release/JViewer-SOC.jar not found. Continuing.
Error flag set for resource 'https://192.168.178.195/java/release/JViewer-SOC.jar'. Can not
return a local file for the resource
Error flag set for resource 'https://192.168.178.195/java/release/JViewer-SOC.jar'. Can not
return a local file for the resource
Error flag set for resource 'https://192.168.178.195/java/release/JViewer-SOC.jar'. Can not
return a local file for the resource
Error flag set for resource 'https://192.168.178.195/java/release/JViewer-SOC.jar'. Can not
return a local file for the resource
No local file found for https://192.168.178.195/java/release/JViewer.jar
Error flag set for resource 'https://192.168.178.195/java/release/JViewer.jar'. Can not return a
local file for the resource
Activate native: https://192.168.178.195/java/release/JViewer.jar
Activate jar: https://192.168.178.195/java/release/JViewer.jar
CachedJarFileCallback.addMapping : https://192.168.178.195/java/release/JViewer.jar ->
https://192.168.178.195/java/release/JViewer.jar
Error flag set for resource 'https://192.168.178.195/java/release/JViewer.jar'. Can not return a
local file for the resource
DownloadServiceListener will be disposed

Download done. Shutting down executor

Sollte es zu diesem Fehler kommen, liegt es an den cipher und sslv3 und das Zertifikat selbst signiert sind.

Das IPMI ist dann so alt, das nix mehr geht.

Lösung:

in OpenWebStart die Einstellungen öffnen

Windows 7 VM für iPMIView und iKVM

Beschreibung:

Da einige ipmis nur ne ganz alte Java Jviewer,jnlp haben, installieren wir ne Windows 7 mit Java 8 bzw Java 5.

Dort dann noch den Hostname noch zur Uasnahme hinzufügen.

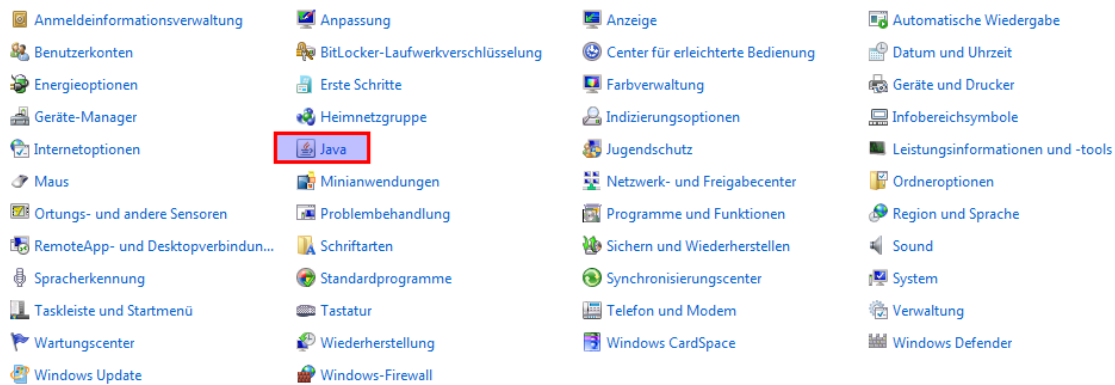
Fertig.

Installation folgender Softawre

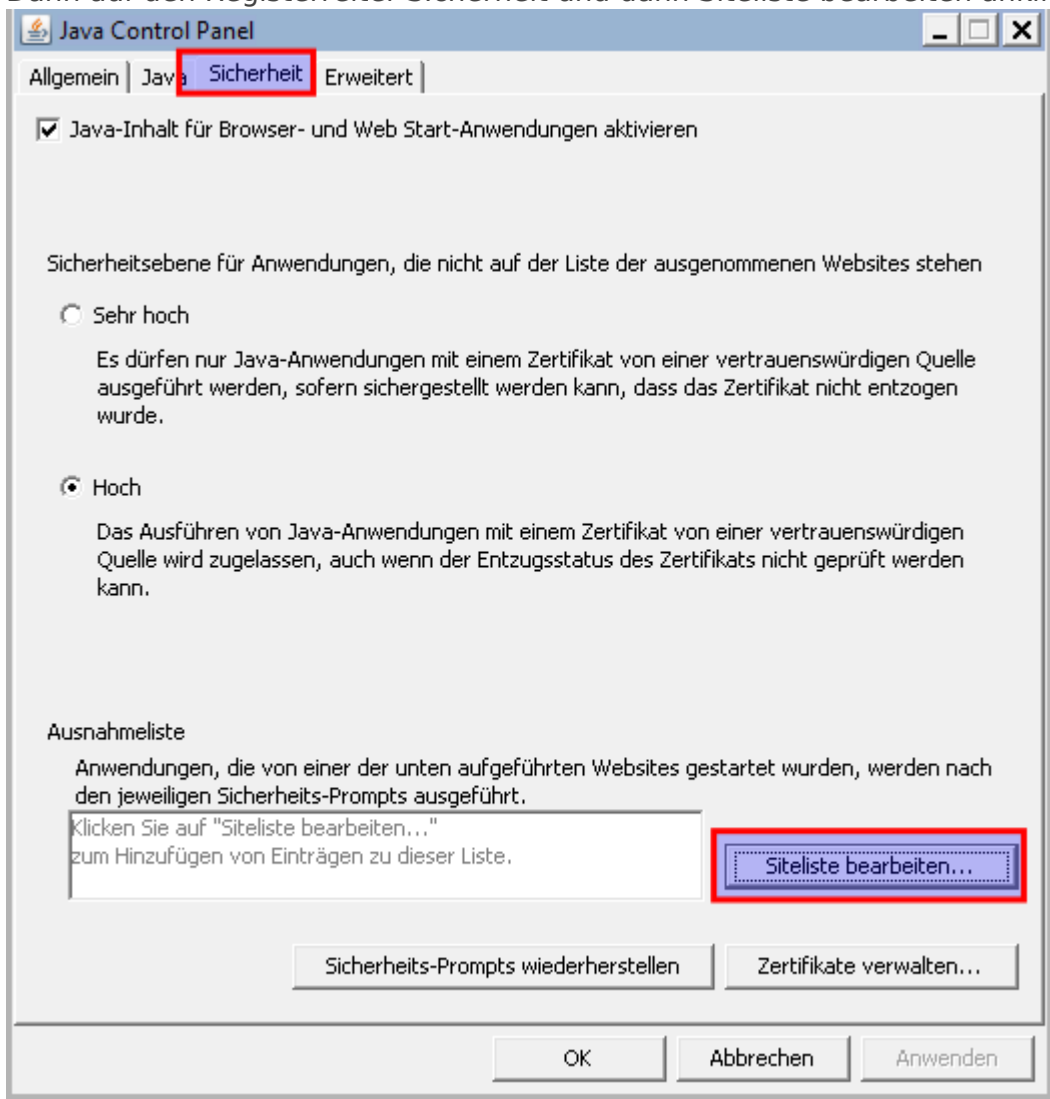
Name	Beschreibung	Download link
Windows 7	Das Betriebssystem	-
Firefox	Webbrowser am besten ab Version 25	Alte Firefox Versionen hier downloaden. Speziell Version 25 zur Exe
Java JRE 8	Altes Java	Java runtime 8 Exe Download
Sollte Java 8 nicht gehen java 5	Noch älteres Java (Oracle Account benötigt)	Java 5 Exe Download
IPMITools Version 2	Ein Programm Sammlung mit dem man IPMI Server verwalten und konfigurieren kann	Link zur Sammlung Direktdownload IPMIView als Gast

Installation

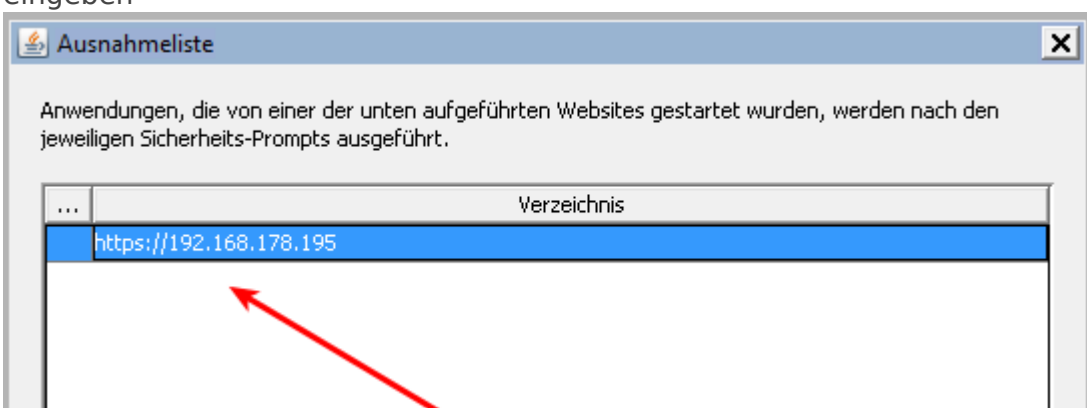
- Windows 7 installieren
- Firefox installieren über google Suche damit diese Wiki Seite aufgerufen werden kann
- Alte Firefox Version installieren in anderes Verzeichnis
- Java 8 / 5 installieren
 - IPMI URL Zur Ausnhame hinzufügen
Dazu Systemsteuerung -> Java ankciken



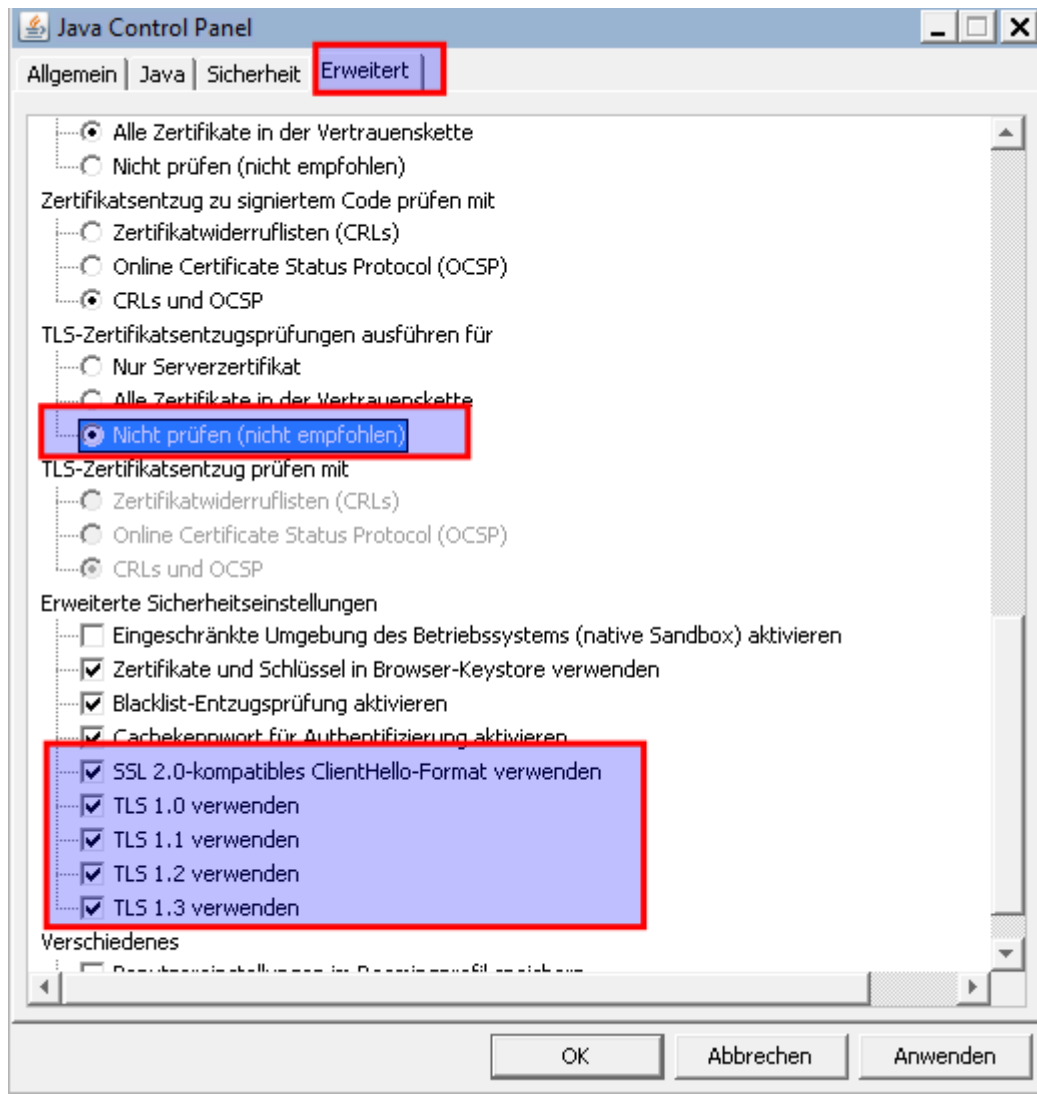
Dann auf den Registerreiter Sicherheit und dann Siteliste bearbeiten anklicken



Dort auf hinzufügen klicken und dann kann man die https Adresse des ipmi Server eingeben

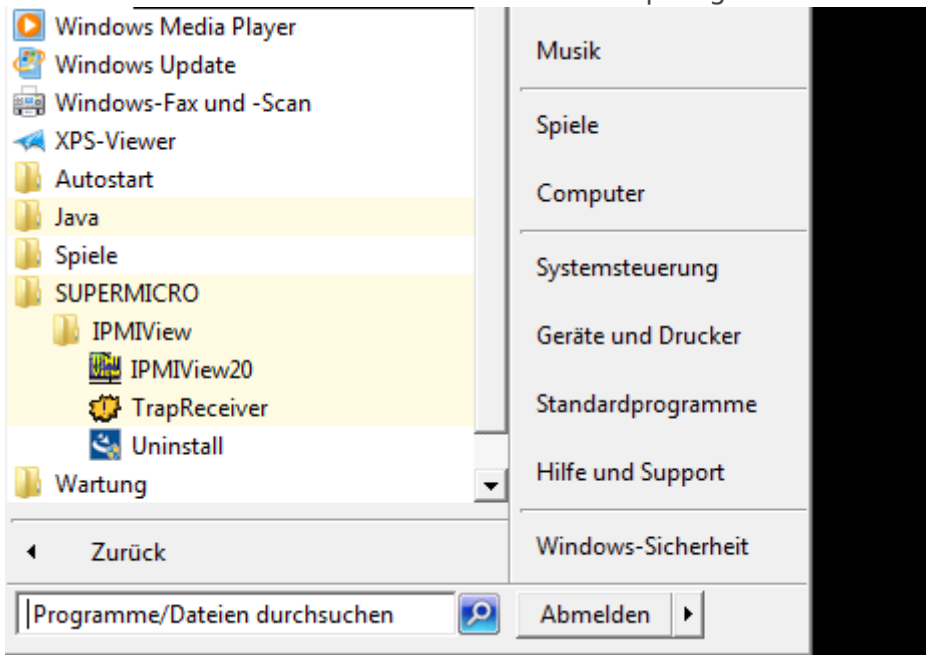


Dann auf erweitert und folgende Haken einhaken:



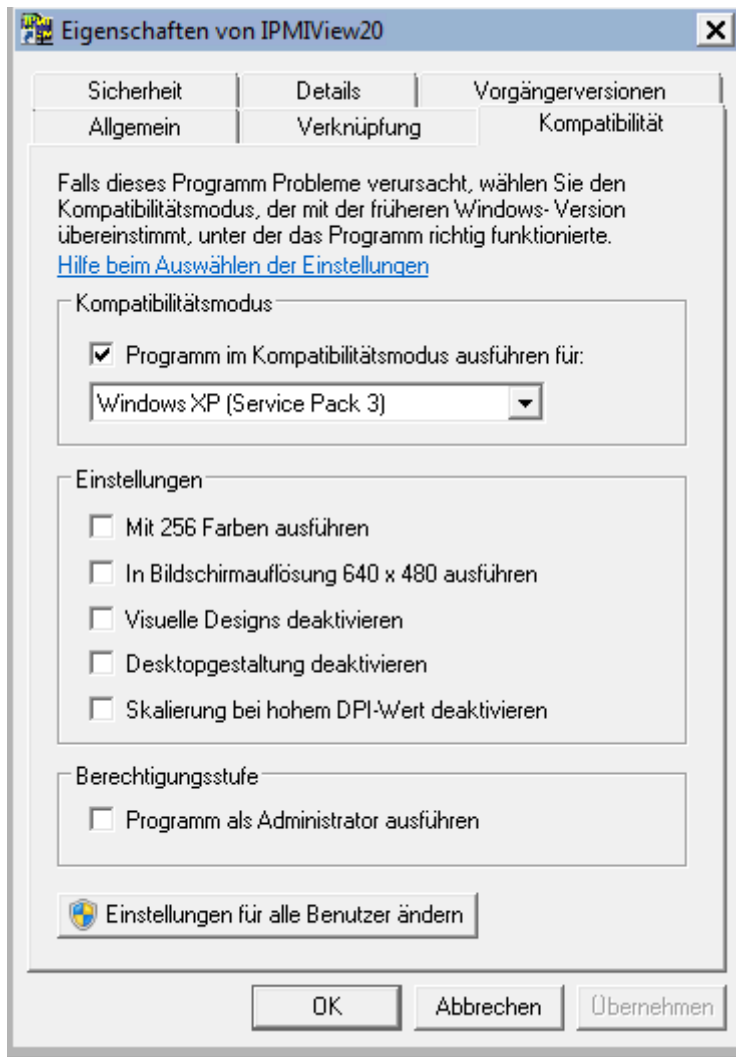
Nun mit OK drückclicken. Fertig

- IPMIView downloaden und Extrahieren und installieren
Danach findet man im Startmenü unter Super Micro das IPMIView
Wenn man möchte kann man sich die Verknüpfung auch auf den Desktop kopieren



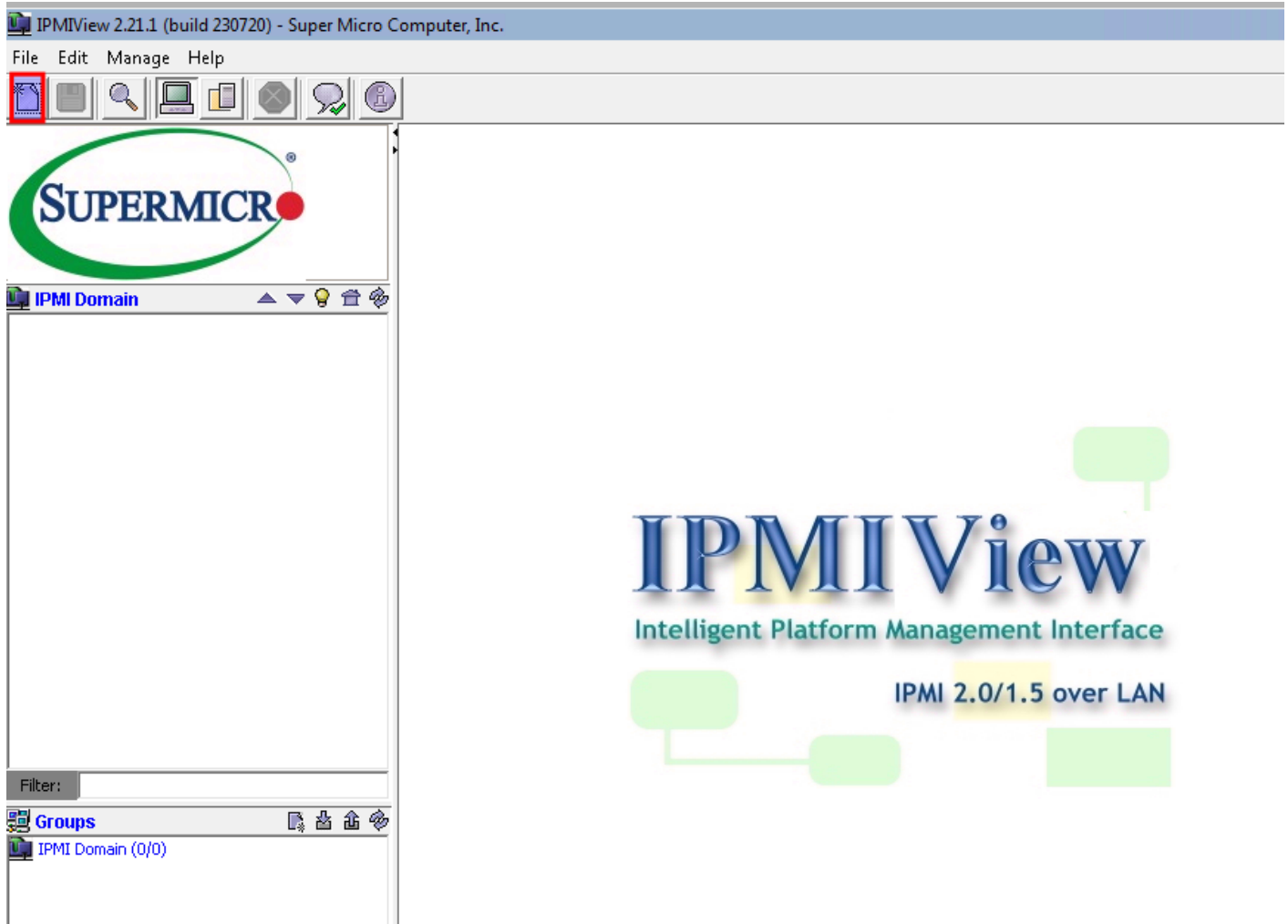
Bedienung IPMIView

Der erste Start dauert ein Wenig. Wenns gar nicht geht, einmal kurz Komp modus für Windows XP rein

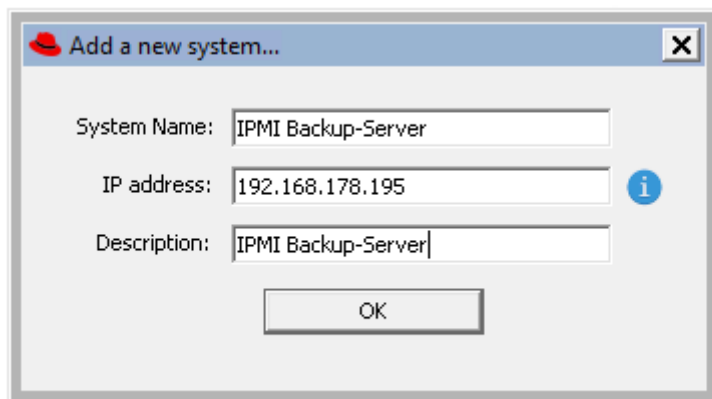


Kann nach dem erfolgreichen start wieder entfernt werden.

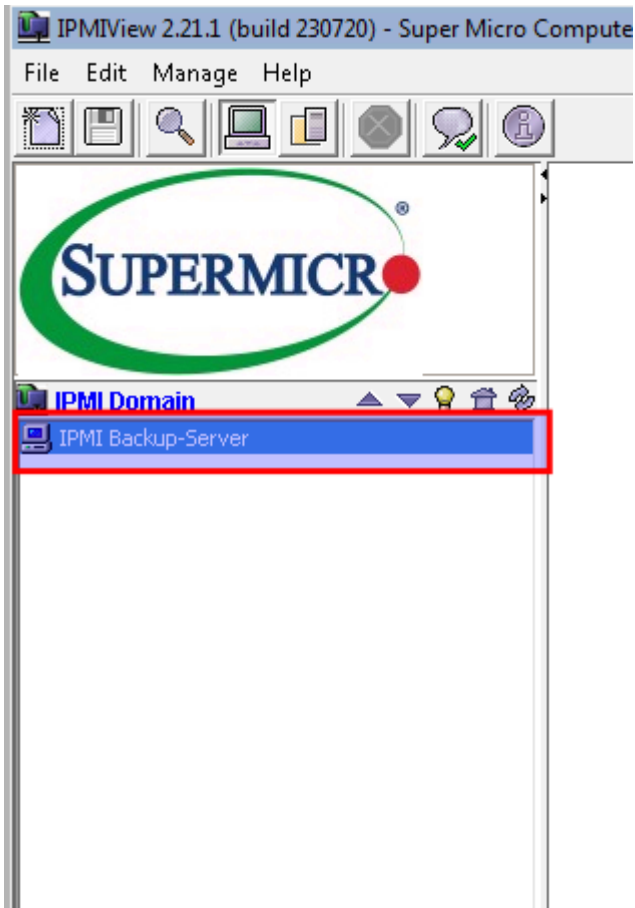
Auf das Neu Symbol klicken



Nun die Daten eintragen



Nun steht unser Server in der Liste. Doppelklick drauf verbinden



Benutzerdaten eingeben. Man kann auch anhaken ob diese gespeichert werden sollen.
Ich machs nicht. Aber geschmackssache

System Name [IPMI Backup-Server](#)

IP Address [192.168.178.195](#)

Description [IPMI Backup-Server](#)

Login ID

Password

save ID and Password

use SMC RAKP

Verbunden

save ID and Password

use SMC RAKP

CONNECTED

Unten sind die Registerreiter für die Verschiedenen Parameter

The screenshot shows the IPMIView 2.21.1 interface for a Super Micro Computer. The main window displays a list of sensors under the 'Sensors' tab, which is highlighted with a red box. The sensors are categorized into Temperature and Voltage. The Temperature section lists various sensors with their status, sensor names, readings in Celsius and Fahrenheit, and low and high limits. The Voltage section lists VCCP_P0, VTT_P0, and VDDQ_P0 with their respective readings and limits. The interface includes a menu bar, a toolbar, and a sidebar with navigation options like 'IPMI Domain' and 'IPMI Backup-Server'. A status bar at the bottom indicates 'Refreshing sensors' status completed'.

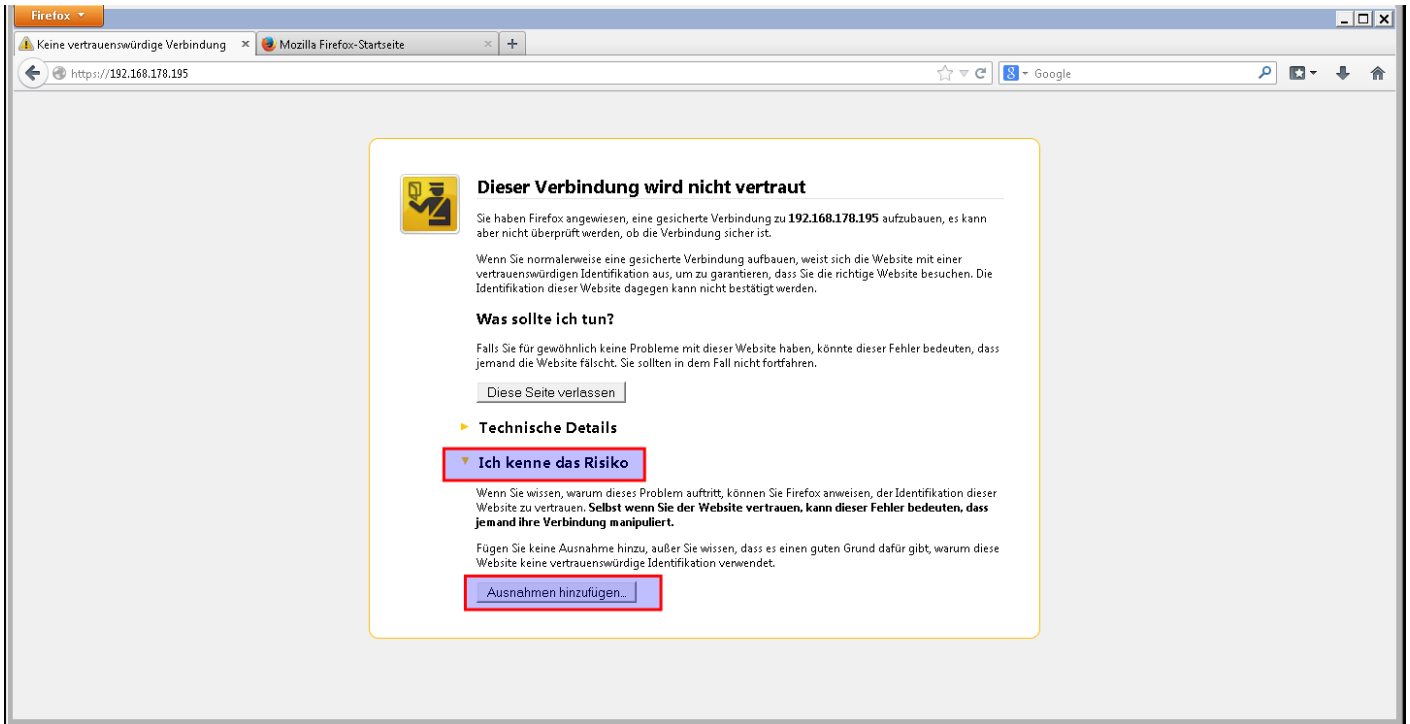
Status	Sensor	Reading	Low Limit	High Limit
OK	CPU0_DTS	54C/129F	N/A	85C/185F
OK	CPU1_DTS	0C/32F	N/A	85C/185F
OK	PCH_Area_Temp	57C/135F	N/A	70C/158F
OK	PCIE_Air_Inlet	46C/115F	N/A	70C/158F
OK	CPU0_DIMM_A0	54C/129F	N/A	85C/185F
OK	CPU0_DIMM_A1	0C/32F	N/A	85C/185F
OK	CPU0_DIMM_B0	52C/126F	N/A	85C/185F
OK	CPU0_DIMM_B1	0C/32F	N/A	85C/185F
OK	CPU0_DIMM_C0	60C/140F	N/A	85C/185F
OK	CPU0_DIMM_C1	0C/32F	N/A	85C/185F
OK	CPU0_DIMM_D0	55C/131F	N/A	85C/185F
OK	CPU0_DIMM_D1	0C/32F	N/A	85C/185F
OK	CPU1_DIMM_A0	0C/32F	N/A	85C/185F
OK	CPU1_DIMM_A1	0C/32F	N/A	85C/185F
OK	CPU1_DIMM_B0	0C/32F	N/A	85C/185F
OK	CPU1_DIMM_B1	0C/32F	N/A	85C/185F
OK	CPU1_DIMM_C0	0C/32F	N/A	85C/185F
OK	CPU1_DIMM_C1	0C/32F	N/A	85C/185F
OK	CPU1_DIMM_D0	0C/32F	N/A	85C/185F
OK	CPU1_DIMM_D1	0C/32F	N/A	85C/185F

Status	Sensor	Reading	Low Limit	High Limit
OK	VCCP_P0	0.98 V	0.64 V	1.34 V
OK	VTT_P0	1.02 V	0.94 V	1.15 V
OK	VDDQ_P0	1.55 V	1.22 V	1.64 V

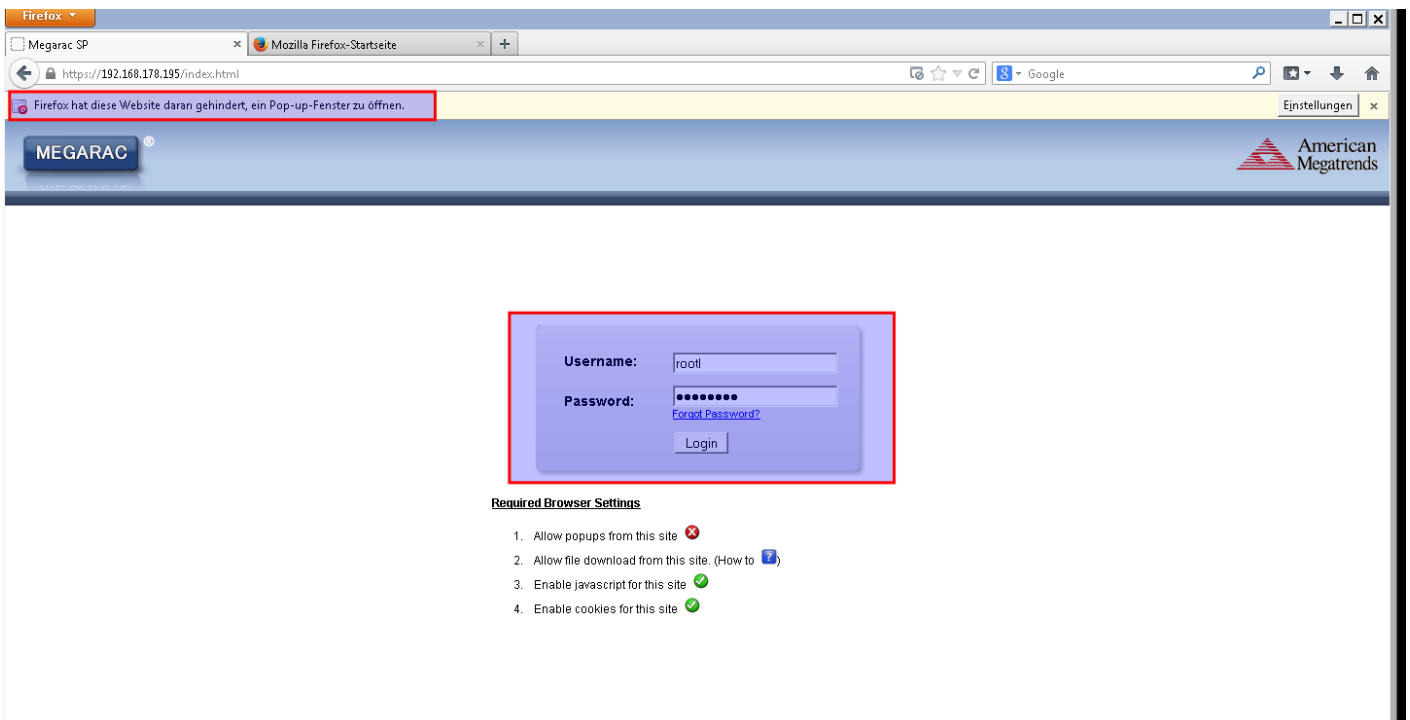
Bedienung iKVM über die Website

Firefox 25 öffnen und die ip Adresse in die Adresszeile eintippen

Die Website zur Ausnahme hinzufügen



Nun Popups immer erlauben aktivieren und dann einloggen



Bis das alles lädt dauert das ein weilchen.
Nun auf launch bei Remote Console klicken

Dashboard

Dashboard gives the overall information about the status of the device and remote server.

Device Information

Device Power Status: On

Firmware Revision: S7050.R10.00

Firmware Build Time: Dec 16 2014 11:07:44 EST

Network Information [\(Edit\)](#)

LAN Interface:


MAC Address:

V4 Network Mode: DHCP












IPv4 Address: 192.168.178.195

V6 Network Mode: Disable

Remote Control

 Java Console

Sensor Monitoring

Status	Sensor	Reading	
●	CPU0_DTS	53 ° C	
●	CPU1_DTS	Not Available	
●	CPU0_PECI	-39 ° C	
●	CPU1_PECI	Not Available	
●	PCH_Area_Temp	57 ° C	
●	PCIE_Air_Inlet	46 ° C	
●	CPU0_DIMM_A0	54 ° C	
●	CPU0_DIMM_A1	Not Available	
●	CPU0_DIMM_B0	50 ° C	
●	CPU0_DIMM_B1	Not Available	
●	CPU0_DIMM_C0	59 ° C	

Nun abwarten es öffnet sich ein Popup und dann die Frage womit starten.
Java Webstart ist richtig, einfach ok anklicken